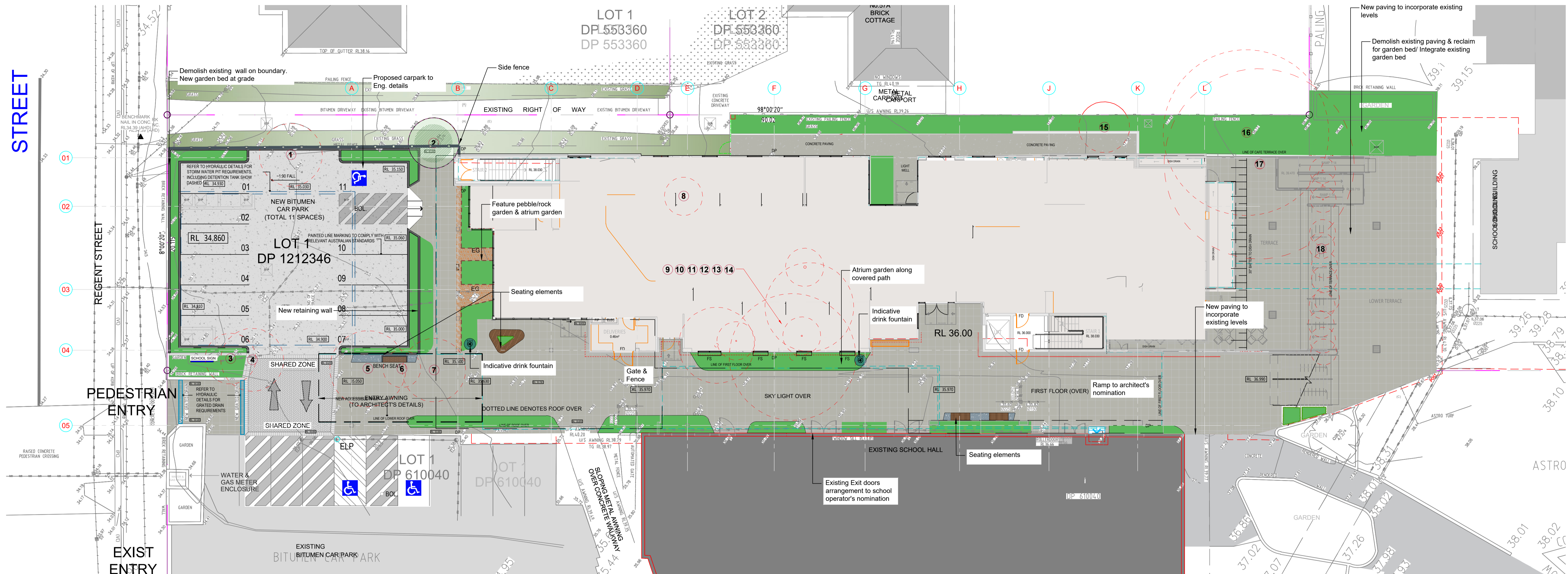




STREET



## HARDSCAPE PLAN

EG

Steel Edging - REFER DETAIL

GARDEN BED

FEATURE PEBBLE PATH

SELECTED PAVING TO BE NOM. BY ARCHITECT

CONCRETE PATH

DRINK FOUNTAIN LOCATION TBC

FEATURE BENCH SEAT ON PLINTH

FEATURE DAY BED SEATING

METAL PALISADE FRONT FENCING

SITE BOUNDARY

LEVEL ABOVE OUTLINE

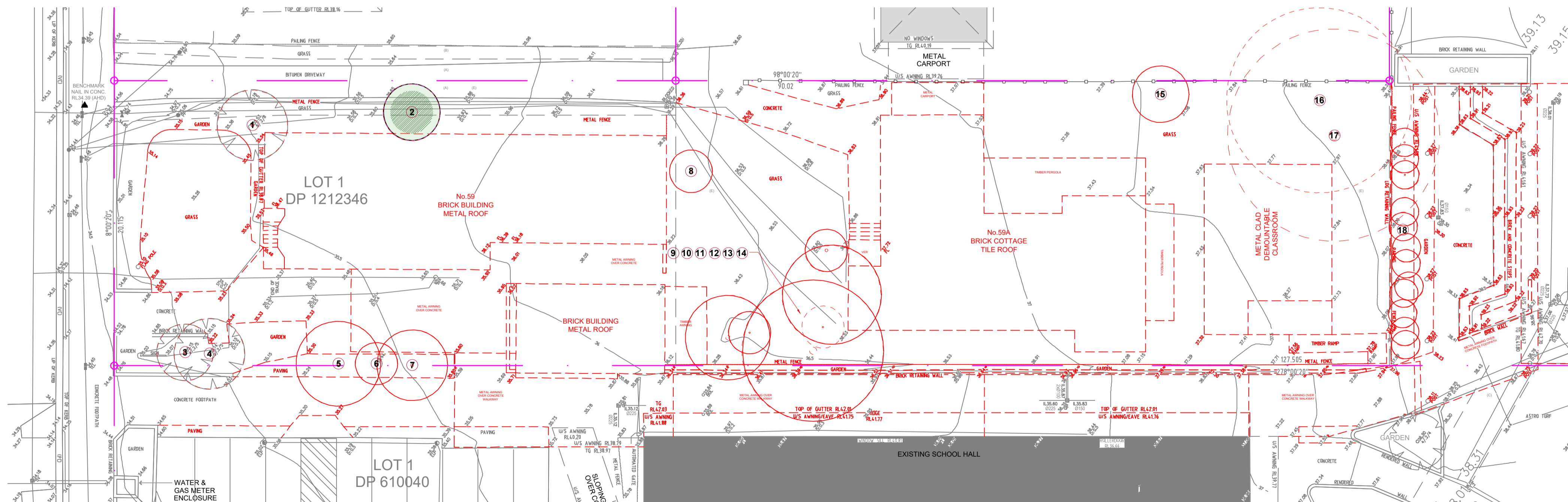
CONTOURS / LEVELS

## TREE SURVEY

Existing Trees information refer to Arboricultural Impact Assessment by LEE HANCOCK prepared on 09.02.2024

No.#	Species	Size (Ht x Sp)	Retention Value	Proposed Action
1	Banksia integrifolia (Old Man Banksia)	5m x 10m <sup>2</sup>	Low	To Remove
2	Lagerstroemia indica (Crepe Myrtle)	3.5m x 10m <sup>2</sup>	Low	To Retain
3	Melaleuca viminalis (Bottle Brush)	4m x 15m <sup>2</sup>	Low	To Remove
4	Melaleuca viminalis (Bottle Brush)	4m x 15m <sup>2</sup>	High	To Remove
5	Melaleuca viminalis (Bottle Brush)	5m x 15m <sup>2</sup>	High	To Remove
6	Melaleuca viminalis (Bottle Brush)	5m x 15m <sup>2</sup>	High	To Remove
7	Melaleuca viminalis (Bottle Brush)	5m x 15m <sup>2</sup>	High	To Remove
8	Murraya paniculata (Sweet Jessamine)	4m x 18m <sup>2</sup>	Low	To Remove
9	Acer palmatum (Japanese Maple)	5m x 20m <sup>2</sup>	Low	To Remove
10	Melaleuca citrinus (Bottle Brush)	4m x 10m <sup>2</sup>	Low	To Remove
11	Melaleuca bracteata (Black Tea Tree)	12m x 25m <sup>2</sup>	Low	To Remove
12	Xanthostemon chrysanthus (Golden Penda)	5m x 10m <sup>2</sup>	Low	To Remove
13	Syzygium spp (Lilly Pilly)	14m x 25m <sup>2</sup>	Low	To Remove
14	Melaleuca bracteata 'Revolution Gold' (Honey Myrtle)	12m x 25m <sup>2</sup>	Low	To Remove
15	Lucidum ligustrum (Broad Leaf Privet)		Low	To Remove
16	Eucalyptus punctata (Grey Gum)	13m x 30m <sup>2</sup>	Low	To Remove
17	Eucalyptus leucoxylon (Yellow Gum)	14m x 30m <sup>2</sup>	Low	To Remove
18	Syzygium spp (Lilly Pilly)	2m x 40m <sup>2</sup>	Low	To Remove

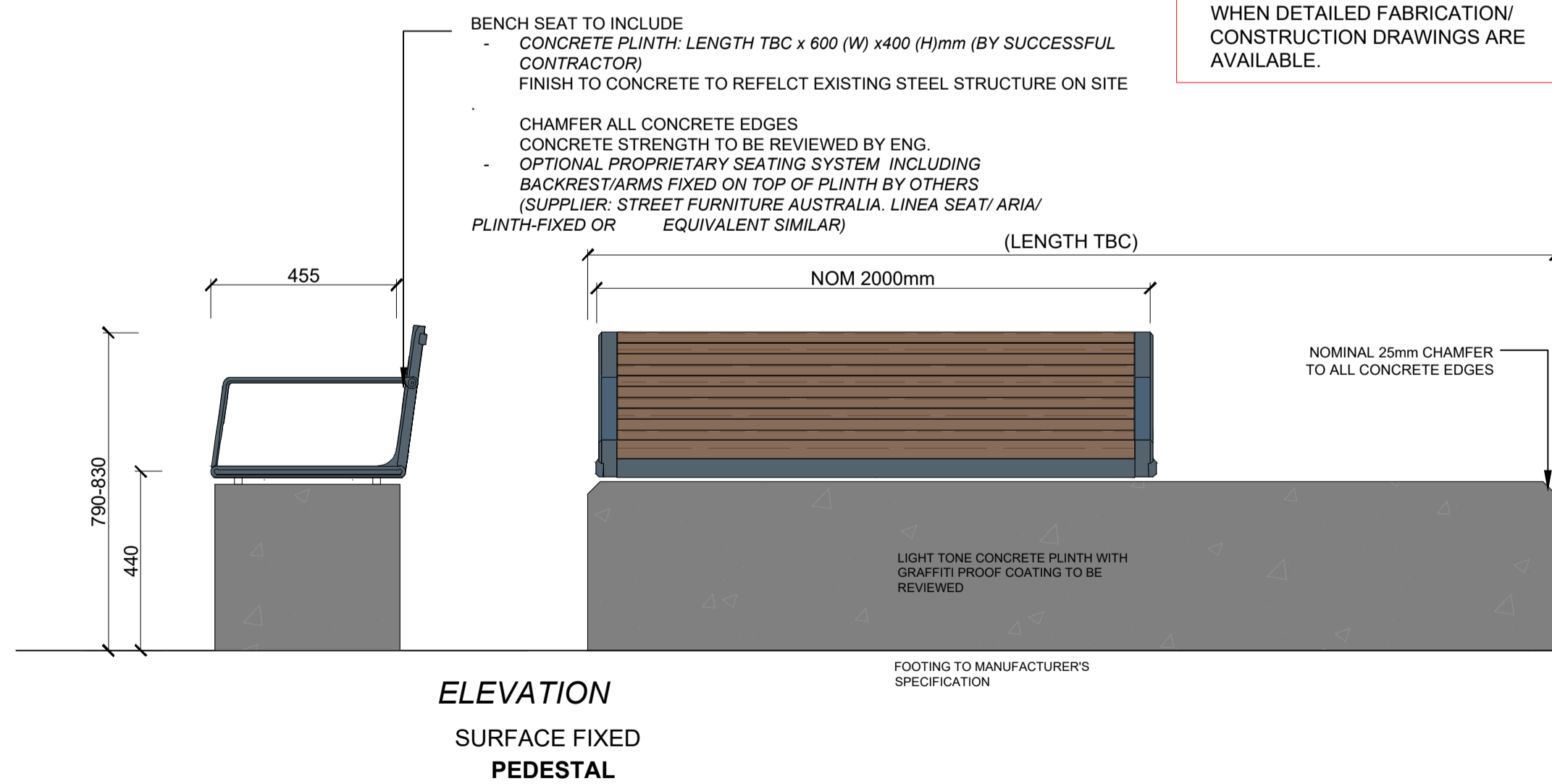
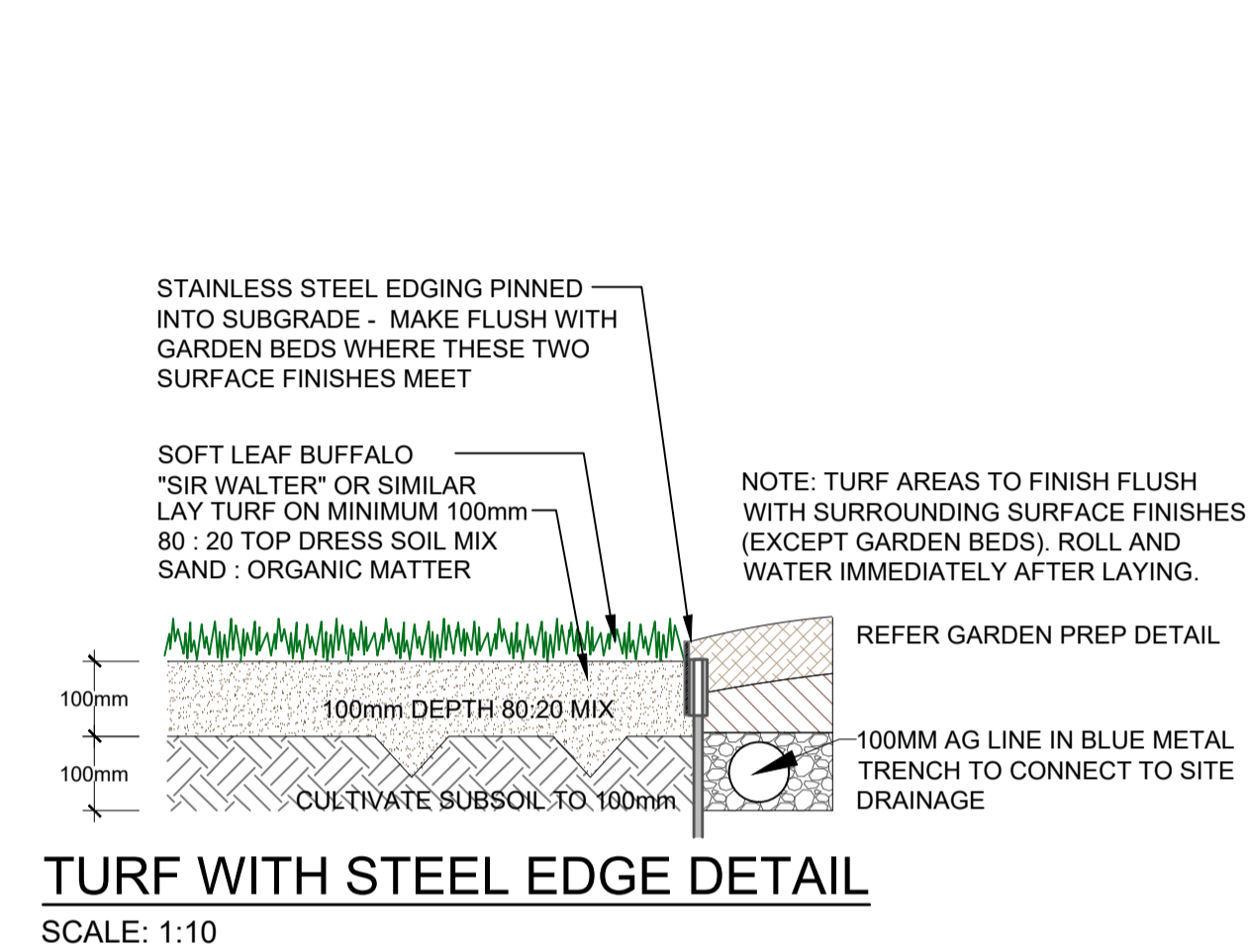
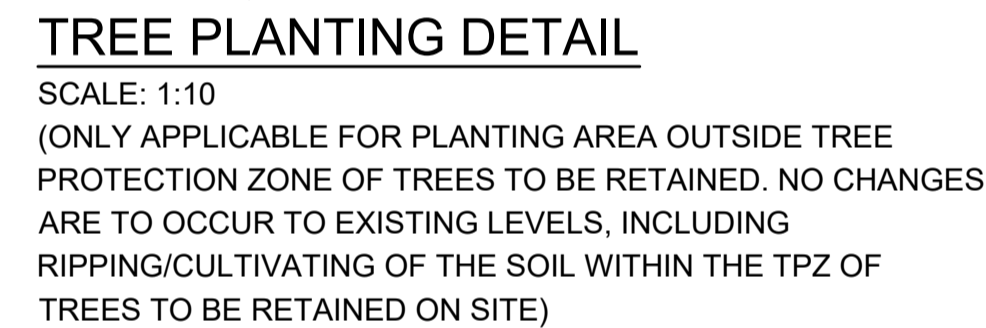
## TREE MANAGEMENT PLAN



### EXISTING TREES

- TREES PROPOSED TO BE REMOVED AND REPLACED WITH NEW LANDSCAPING
- TREES PROTECTION ZONE - REFER TREE ARBORIST REPORT
- EXISTING TREES PROPOSED TO BE RETAINED AND PROTECTED
- STRUCTURAL ROOT ZONE - REFER TREE ARBORIST REPORT





## PLANTER SEAT ELEMENT

Proprietary item by *SatuBumi*